

THE CITY OF ALBUQUERQUE



Albuquerque, founded in 1706, is one of the oldest inland cities in the U.S.

Elevation is 5,314 ft., the highest metropolitan city on the American mainland.

Albuquerque is the Hot Air Balloon Capital of the U.S. The city hosts the largest international hot air balloon competition in the world and draws crowds of more than 1.5 million people.



Albuquerque is more than 162 sq. miles and home to around 550,000 people. It's the 38th largest city in the U.S. in terms of population.

The sun shines an average of 310 days a year. Year-round average temperatures range from 42° to 77°.



Sandia Peak Tramway stretches 2.7 miles along the Sandia mountains. It is the longest single span tram in the world. Sandia Crest offers a panoramic view of more than 11,000 sq. miles.

Nine national monuments are located within a day's drive of Albuquerque.

k e y f a c t s



Employment

Housing

**Vehicle
Registration**

Job seekers are encouraged to contact the New Mexico Department of Labor, 501 Mountain Road NE, Albuquerque, NM 87102 **(505) 841-9300**. The agency offers the largest pool of job listings in the state, as well as a full staff of qualified employment counselors and placement interviewers.

The agency also issues several publications about the current job market: ***Large Employers in the Albuquerque Area, New Mexico Job Hunter's Guide, New Mexico Labor Market Review, New Mexico 2006 Economic Projections.*** To order, call the Publication Hotline at **(505) 841-8711**. Also, check out the Department of Labor's Web Site at <http://www.state.nm.us/dol/>.

Throughout the city's four major quadrants and surrounding areas, housing possibilities vary greatly in price, style and availability.

Single family homes and townhouses are available for sale through the Albuquerque Metropolitan Board of Realtors Southwest Multiple Listing Service (accessible by all **Coldwell Banker PARNEGG METRO agents**). Visit our web site at www.parneggmetro.com.

To register your vehicle (new residents have 30 days), you must take the vehicle to the Motor Vehicle Division and provide proof of (a) ownership, (b) liability insurance, and (c) compliance with state emission-control standards. Registration fees are based on the vehicle's age and weight. Call **1-888 683-4636** for information and locations.

key facts



New Mexico has a graduated state income tax. In other words, the tax rate rises as income increases, with personal income tax piggy-backing on Federal income taxes.

The statewide gross receipts tax of 5% applies to almost all goods and services exchanged. Local communities can levy additional increments. The total gross receipts tax in Albuquerque is currently **5.8125%**.

All real property and business personal property is subject to taxation under New Mexico law. Real property valuations are based on market value. Business personal property must be reported to the Bernalillo County Assessor's Office by the last day of February each year.

For information regarding real and business personal property taxation, call the Bernalillo County Assessor's office at **(505) 222-3700**. For other tax questions, contact the Department of Taxation and Revenue in Albuquerque at **(505) 841-6200**.

ALBUQUERQUE has no residency requirements for voter registration. Anyone who will be 18 years old by the date of the next election may register. To be eligible, you must be registered 28 days prior to the election. Information on locations of registration offices is also available from the Bernalillo County Bureau of Elections/Voter Registration at **(505) 768-4085**. You can also call the League of Women Voters **(505) 884-8441**; the Democratic Party **(505) 830-3650** or the Republican Party **(505) 298-3214**.

To qualify for in-state tuition rates at the state schools, you are required to have been physically present in the state for a period of no less than 12 consecutive months. You must demonstrate your intention of becoming a permanent resident by registering your motor vehicle, obtaining a driver's license and securing employment. An exception is possible for dependent students who move to the state with their families. Residency can be presumed if a parent supplies documentation of employment expected to continue throughout the coming year.

Taxes

Residency
Requirements

albuquerque's major employers



Employer	Employees	Description
University of New Mexico	14,401	Educational Institution
Albuquerque Public Schools	10,600	Educational Institution
City of Albuquerque	9,000	Government
Sandia National Labs	6,663	Research & Development
Presbyterian	5,800	Hospital & HMO
Kirtland Air Force Base (Military)	5,468	Government
State of New Mexico	5,217	Government
Intel Corporation	5,000	Semiconductor Mfg.
Kirtland Air Force Base (Civilian)	3,509	Government
Lovelace Medical Center	3,225	Hospital
St. Joseph's Healthcare System	3,000	Hospital
UNM Hospital	2,909	Hospital
Wal-Mart	2,119	Retailer
U.S. Post Office	2,095	Government
PNM Electric & Gas Services	1,724	Electric/Gas Utility
Albuquerque TVI	1,700	Educational Institution
Bernalillo County	1,606	Government
Veterans' Administration Medical Center	1,600	Hospital
Honeywell Defense Avionics Systems	1,400	Aircraft Avionics Mfg.
Los Lunas Public Schools	1,278	Educational Institution
America Online	1,200	Technical Support Ctr.
Furr's Supermarket, Inc.	1,150	Grocery Chain
Philips Semiconductors	1,100	Integrated Circuits Mfg.
Smith's Food and Drug	1,100	Grocery Chain
Spring PCS	1,100	Customer Service Ctr.
US West	1,100	Telephone Utility
MCI Consumer Markets	1,000	Teleservice
Rio Rancho Public Schools	983	Educational Inst.
Albuquerque Publishing Company	930	Newspaper
Casino Sandia	800	Casino
Ethicon Endo-Surgery	800	Endoscopic Instruments
GE Aircraft Engines	800	Aircraft Engine Mfg.
Norwest Bank of New Mexico	765	Financial Institution
VoiceStream Wireless	760	Customer Service Ctr.
CTS Wireless Components	750	Electronics Mfg. Ceramics
Citicorp Credit Services	725	Credit Card Support Ctr.
Isleta Gaming Palace	675	Casino
Victoria's Secret Catalogue	650	Catalogue Center
Teleservice Center for Social Security	640	Govt. Teleservice Center
Bank of America	600	Financial Institution
Blue Cross/Blue Shield of NM	600	Health Insurance
SunHealthcare Group	600	Corporate Hdqtrs.

Albuquerque

LIFESTYLE



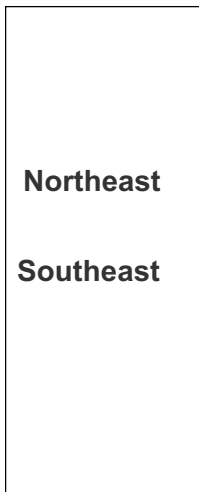
Let **Coldwell Banker Parnegg Metro Realtors** be your guide as we help you feel right at home in the Land of Enchantment. Whatever your lifestyle, we have the expertise and resources to match you with your new home in the Duke City. Whether you choose to live in a sprawling adobe in a nearby historic township, a stately brick split-level in the heart of the city, or a modest bungalow, we can find it.



Whatever your taste or lifestyle, there's a place for you in our high desert city. From sprawling adobes to stately bricks, your choices for housing seem almost endless. Begin your search by getting your bearings. The majestic Sandia Mountains stand to the east, while flat mesas edge the western horizon.

The city is divided into four quadrants: Northeast (NE), Southeast (SE), Northwest (NW), and Southwest (SW). The North/South dividing line is Central Avenue or "Old Route 66." The East/West dividing line is Broadway. Each quadrant offers a diverse range of housing opportunities through a network of unique subdivisions and neighborhoods.

You'll find Albuquerque's friendly lifestyle helps newcomers feel right at home soon after they relocate. Many residents are active in their neighborhood association, of which there are more than 225 throughout the metropolitan area. The office of Neighborhood Coordination **(505) 924-3914**, a division of city government, provides workshops, a directory, a monthly newsletter and other assistance to neighborhoods dealing with such issues as zoning, parks and traffic.



Northeast

Southeast

The city's **NORTHEAST HEIGHTS** stretches from the University of New Mexico to the foothills of the Sandias. The mountain boundary to the east and Sandia Pueblo to the north limit massive development. Some of the City's most affluent subdivisions lie within this area, including Sandia Heights, Tanoan, High Desert and Glenwood Hills. One of the newest subdivisions, North Albuquerque Acres, features upscale residences on large lots. Dozens of other neighborhoods offer homes in almost every style and price range.

The **SOUTHEAST** section incorporates Kirtland Air Force Base, Sandia National Laboratories and the Albuquerque International Airport. Housing developments range from the well-established Ridgecrest and Four Hills areas to the refreshingly contemporary Willow Wood. You'll find this area offers suitable housing for most family needs.





Perhaps the most diverse area of the city lies within the **Northwest** quadrant. Secluded, rural properties surrounded by massive cottonwoods typify Albuquerque's serene North Valley. Across the Rio Grande atop the West Mesa are the city's newest residential and commercial developments; though some, such as Paradise Hills and Taylor Ranch, date back several decades. Dozens of homebuilders offer an extensive array of affordable housing possibilities, with prices starting at around \$110,000.

Primarily an agricultural area, Albuquerque's **South Valley** offer residents rural living at an affordable price. Many homes are southwestern in style and often include barns for livestock. Come closer to the Downtown area and you'll find Albuquerque's prestigious Old Country Club neighborhood. Lushly landscaped and quiet, this neighborhood is widely considered one of the most desirable residential locations in the city. During the Christmas holidays, many of the homeowners set out thousands of luminarias or little lights, creating awesome nightly displays for all to enjoy.

A planned community northwest of Albuquerque, **Rio Rancho** is known for its phenomenal growth and economic development. Attractive housing prices make it popular with first time buyers and retirees. Financial incentives have also been successful in luring several major corporations to set up shop in the area, including Intel, Gateway 2000, Spring and Victoria's Secret.

Adjacent to the North Valley, the village of **Corrales** is unlike any other. An abundance of small arts and crafts shops and superb restaurants line the winding road that meanders through the township. Residences often sit on large plots of land, sometimes as much as several acres. There are still small, productive farms and orchards. The pastoral setting provides a relaxed lifestyle that residents share with pets, horses and farm animals.

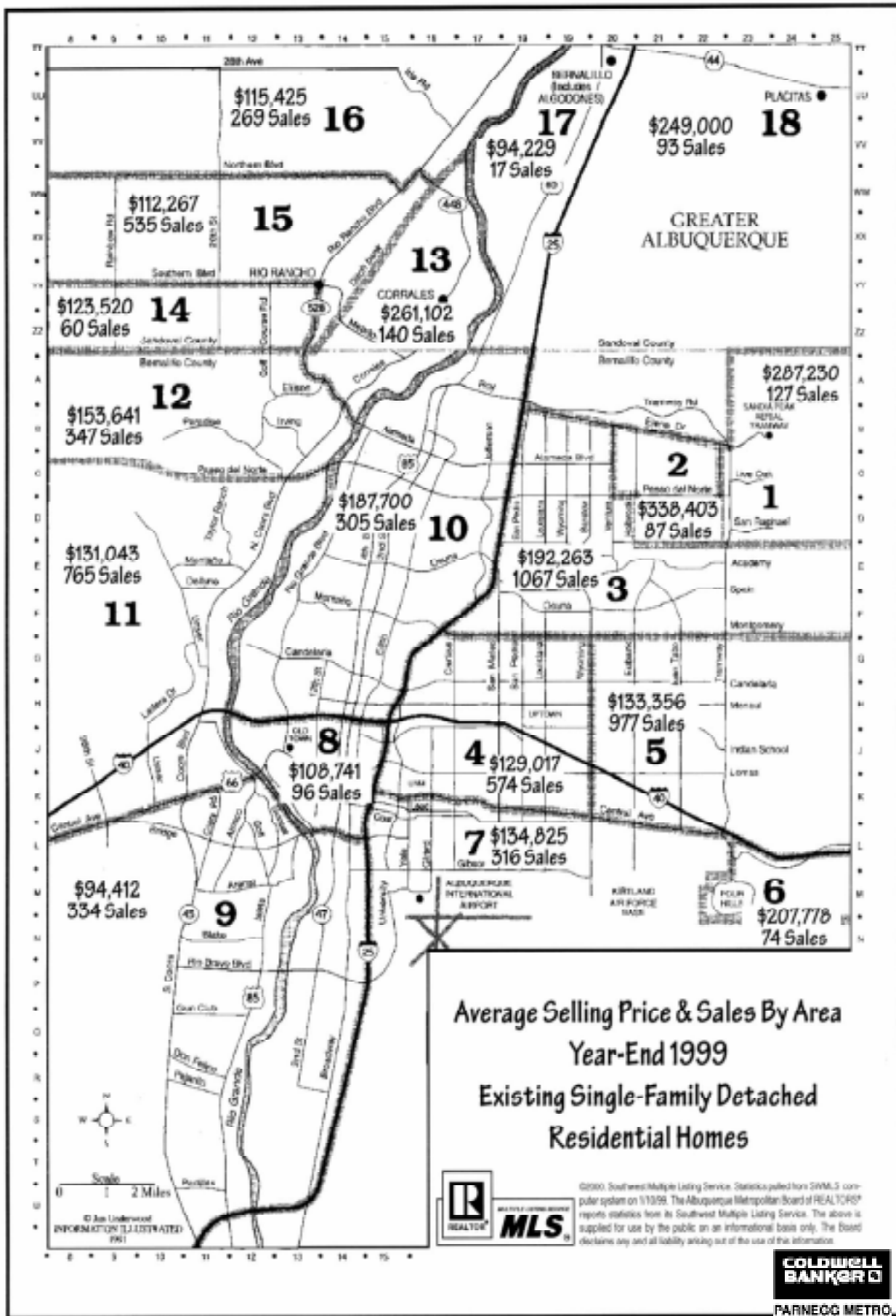
Slightly farther north, **Placitas** offers sites with more land, bigger homes and continuity of architectural style (Pueblo and Territorial designs are the most relevant). Founded in 1745, the area was initially a large tract of land divided among 21 families, many of whose descendants still live in the area. Today, Placitas is a quiet, low density residential community offering spectacular views day or night.

Northwest
Southwest
Corrales
Rio Rancho
Placitas



Minutes away from Albuquerque off South I-25 are the townships of **Bosque Farms** and **Los Lunas**. For those who want to leave the hustle-bustle of the city behind and savor a more simple way of life, these two communities are hard to match. Small “Mom and Pop” businesses in the area provide basic necessities. One of the area’s historic landmarks, The Luna Mansion, has been restored into an elegant restaurant.

Through Tijeras (Spanish for “scissors”) Canyon on the east side of the Sandias are several small communities, including **Cedar Crest**, **Sandia Park** and **Sandia Knolls**. All are quiet places inhabited by those seeking a more rural environment and who prefer living along the rugged mountains high in the pinons and pines.



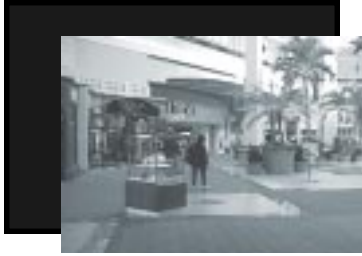
Average Selling Price & Sales By Area
Year-End 1999
Existing Single-Family Detached
Residential Homes



©2000 Southwest Multiple Listing Service. Statistics pulled from SWMLS computer system on 1/10/99. The Albuquerque Metropolitan Board of REALTORS® reports statistics from its Southwest Multiple Listing Service. The above is supplied for use by the public on an informational basis only. The Board disclaims any and all liability arising out of the use of this information.



PARNEGG METRO



Retail ventures of every size and type thrive in Albuquerque. There's an endless variety waiting your discovery from contemporary malls to one-of-a-kind specialty stores to first-class flea markets. You'll find it all in Albuquerque. So, grab your wallet and let's shop 'til we drop.

Coronado Center and Winrock Mall

Located in the Uptown area just north of I-40, these two large enclosed malls sit almost across from each other on Louisiana Blvd. Both offer several major department stores on two shopping levels, a wide selection of local and national familiar favorites and food courts catering to every type of taste.

Department Stores: Macy's, Foley's, JC Penney, Sears, Dillard's, Montgomery Ward, Mervyn's

Chain Stores: Casual Corner, Border's Books, Eddie Bauer, Bombay Company, Victoria's Secret, Godiva Chocolates, The Gap, Zale's Jewelers, Oshman's Sporting Goods.

Cottonwood Mall

The long-awaited, newly constructed Cottonwood Mall on Albuquerque's west side opened in the fall of 1996. Major anchors in the 1.2 million-square-foot facility include Dillard's, Sears and JC Penney. A major entertainment complex, several franchised restaurants and more than a hundred specialty stores are also a part of the huge retail enterprise.

Old Town

Since 1706, Old Town has been the historic focal point and heart of our community. Today, dozens of shops, galleries and several excellent eateries surround the original town plaza. Many of the shops offer Southwestern items, such as jewelry and pottery, but there are a number of unique clothing stores and several gift shops. Hidden garden patios allow shoppers time to pause between purchases.

Nob Hill

Old Route 66 takes a decidedly different turn as it stretches through Nob Hill near UNM. Enjoy a sophisticated and eclectic variety of stores selling everything from antiques to organic produce, designer to vintage clothes, new and used books, avant-garde housewares and unique accessories.

Indoor Mercado

The Indoor Mercado at I-40 and 12th Street NW is an all-season alternative. Vendors sell everything from fresh-baked bread and pastries to Native American Jewelry and African baskets.

NM State Fairgrounds Flea Market

Bargain hunters flock to the State Fairgrounds Flea Market on Saturdays and Sundays year-round. The outdoor marketplace brings hundreds of vendors and shoppers together in one place for a weekend of shopping fun. Admission is free, but there is a small fee for parking.

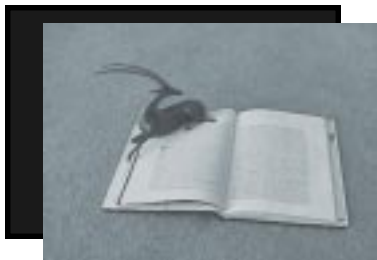


Albuquerque

EDUCATION



Education is one of the most important issues facing this country and Albuquerque is tackling it head-on. Students benefit from a wide range of educational programs, prestigious college prep schools, year-round and bilingual public schools, private schools, and a top rated university and community college.



Albuquerque's educational system has risen to the demands of a growing population through innovation and one-on-one contact with students. From the Albuquerque Public Schools (APS) to the University of New Mexico, the quality and range of programs in the city continues to increase in step with Albuquerque's population. The University of New Mexico defines a regional and national standard of excellence with its 11 degrees granting programs and distinguished research facilities.

The APS district is one of the largest in the U.S., with over 85,000 students. APS includes 79 elementary schools (K through grade 5), 24 middle schools (6 through 8), 11 regular high schools, and 6 alternative high schools for students with special needs. All APS schools offer special educational opportunities for handicapped and gifted students.

Parents are encouraged to discuss details of specific projects and facilities personally with principals and administrators. You can reach the **APS Central Office** at **(505) 842-8211** or visit the web site at **www.aps.edu**. APS's Community Relations Department also distributes a comprehensive information packet, including district boundary maps. Call **(505) 842-3606** to order. Rio Rancho established its own school district in 1997, independent of APS. For more information, call **Rio Rancho Public Schools** at **(505) 896-0667**.

A complete list of high, middle and elementary schools is included in the information packet distributed by Community Relations Department.

Albuquerque has an excellent selection of private and parochial schools. Approximately 13% of Albuquerque's children attend one of over 70 private or parochial schools in the community. The Albuquerque Academy is considered to be one of the area's top private nondenominational schools, and is first among area independent schools in endowment. Some of the larger private/parochial schools include the following:

Albuquerque Academy
Esquela del sol Montessori
Manzano Day School
Sandia Prep

Bosque Preparatory School
Immanuel Lutheran
Menaul School
Sunset Mesa



PARNEGG METRO



The **University of New Mexico** opened its doors in June 1892 with an enrollment of 25 students. Today, with over 30,000 students, it is the state's largest university. Offering more than 4,000 courses with degree programs ranging from associate through doctorate, the university is nationally recognized for its programs in Latin American studies, anthropology, photography, biology, nuclear pharmacy, laser optics and environmental studies, among others.

Research is a top priority at UNM. Federal agencies, industry, national laboratories, foundations, and the state of New Mexico have provided \$175 million in contracts and grants for UNM-sponsored projects ranging from engineering and medicine to education and the humanities. UNM is one of only 88 Carnegie Research 1 universities in the country.

Undergraduate tuition per year for full-time residents is \$2,241.60. For full time non-residents it is \$8,461.20. Financial aid is available to undergraduate, graduate/professional and non-degree/unclassified students.

The second largest post-secondary school in New Mexico with an enrollment of about 20,000 Albuquerque **Technical Vocational Institute (TVI)** is an accredited community college offering educational courses leading to certificates in 41 business, health, technology and trade occupations; associate degrees in 34 occupational and liberal arts fields; college transfers; and continuing education. TVI is the largest supplier of transfers to UNM and has an overall placement rate of about 93 percent. There is a \$22.25 registration fee for credit courses, with occupational and developmental courses free to New Mexico residents. Tuition for liberal arts courses is \$30.50/credit hour.

Other institutions of higher education located in the area are:

Chapman University
Franklin College
Pima Medical Institute

College of Santa Fe
Parks College
University of Phoenix



PARNEGG METRO

c h i l d c a r e



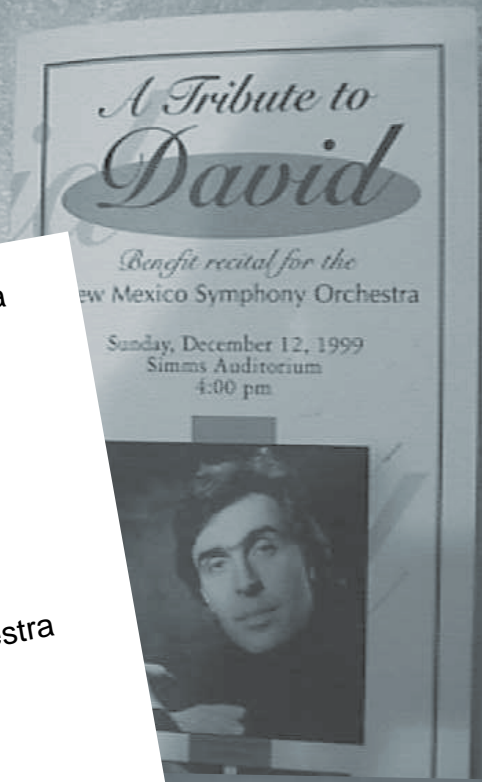
There are more than 130 licensed child care providers in the greater Albuquerque area providing excellent care and supervision for children from six weeks to twelve years of age. The Child Care Licensing Board, a division of the New Mexico Children, Youth and Families Department, is responsible for licensing child care centers and day care homes. The agency can be reached at **(505) 867-5659**.

The YWCA operates Carino, a resource and referral service to help parents find and evaluate prospective child care providers. For information call **(505) 265-8500**. Parents can also choose from several preschool programs offered throughout the city, as well as private and church affiliated providers. To give newcomers a head start at finding the right provider for their children, the following list of Albuquerque's largest child care centers is presented:

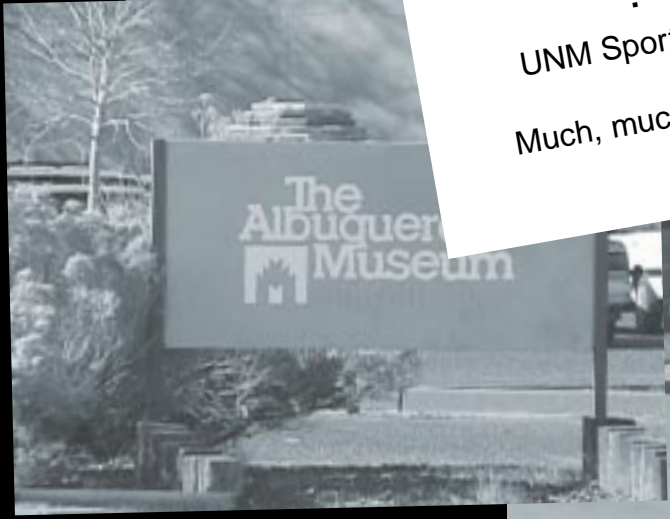
Name & Telephone	Total Capacity	No. of Locations
Bright Beginnings 771-1705	2,200	12
Kindercare 293-8426	700	7
YMCA 881-4787	600	10
LaPetite Academy 831-9474	420	4
Southwest ChildCare 293-2626	350	3
Children's Center 881-9565	280	1



PARNEGG METRO



- Symphony Orchestra
-
- Ballet
-
- Opera
-
- Theater
-
- Chamber Orchestra
-
- Boy Choir
-
- Balloon Fiesta
-
- State Fair
-
- Ice Hockey
-
- Baseball
-
- UNM Sports, and
- Much, much more...





Albuquerque's many-splendored cultural attractions reflect the right diversity and talent of its people. Let yourself be entertained at any number of presentations - concerts, operas, musicals, stage shows, theater presentations, dance performances - you name it! Here's your ticket to limitless enjoyment:

New Mexico Symphony Orchestra

881-8999

Nationally renowned orchestra offers both classical performances and pops concerts. Some events feature guest soloists and 100-member Symphony Orchestra Chorus.

Chamber Orchestra of Albuquerque

881-0844

For more than two decades, this 32-member Orchestra performs six regular concerts of romantic, classical and baroque compositions as well as selections from 20th century composers.

New Mexico Jazz Workshop

255-9798

Offers classical jazz concerts showcasing local and touring jazz artists.

New Mexico Ballet Company & Academy

292-4245

This semi-professional company presents original works and classics.

Musical Theater Southwest (Formerly Albuquerque Civic Light Opera)

262-9301

A true community theater and leader in promoting musical theater. Presentations range from Guys and Dolls to Fiddler on the Roof.

Albuquerque Boy Choir

299-7700

Performing since 1938, the Boy Choir presents a full series of concerts from October through May, including joint concerts with the American Boy Choir.

Albuquerque Little Theater

242-4750

For more than 68 years, ALT has staged amateur performances of comedies, mysteries and light classics covering the gamut of American theater.

The Adobe Theater

898-9222

Since 1960 the Adobe Theater has delighted audiences with its year-round schedule of ambitious productions.

Vortex Theater

247-8600

Unique, experimental and modern theater productions, as well as timeless classics set Vortex Theater productions apart from all others.

La Compania de Teatro de Albuquerque

242-7929

The highly acclaimed La Compania is one of the few Hispanic theaters in the country. Its bilingual productions reflect the joys and dramas of New Mexican life.



PARNEGG METRO



Every season of the year brings a special brand of enchantment to Albuquerque. Whatever time of the year, there's an event to capture your attention and win your heart for a repeat performance. Here's a brief glimpse of some of the city's major events. For a comprehensive calendar, call the **Albuquerque Convention and Visitors Bureau, (505) 842-9918** or **1-800-284-2282**.

Kodak Albuquerque International Balloon Fiesta

821-1000

Heralded as the world's largest balloon event, held in October; features mass ascensions with over 600 hot-air, gas and helium balloons, Special Shapes Rodeos, Balloon Glows and competitive events.

New Mexico State Fair

265-1791

The annual September event combines concerts by big name C&W stars, carnival rides, livestock and agricultural exhibits, arts and crafts competitions, entertainment at the Indian and Spanish Villages, plus a feast of food.

Summerfest

768-3483

Different ethnic groups (Native American, German, Irish/Scottish, Cajun/French, African-American, Caribbean/South American, Hispanic) bring food, music, dance, arts & crafts to residents on Saturday Summer nights downtown on Civic Plaza.

Magnifico!

242-8244

Albuquerque's Festival of the Arts held annually in April features more than 2000 performances, exhibits and events highlighting Albuquerque's visual, performing, literary and culinary arts.

Arts & Crafts Fairs

Creative works in all media attest to the talent of gifted individuals living in the Southwest. Three of the most acclaimed events are the New Mexico Arts & Crafts Fair in June, the Southwest Arts & Crafts Fair in November; and Weems Artfest in December.

Christmas Eve Luminaria Tour

842-9918

A breathtaking tour highlights one of the city's most enchanting traditions. Thousands of luminarias (also known as farolitos) line city sidewalks, homes and buildings during the holiday season.

New Mexico Scorpions

232-PUCK (7825)

Exciting ice hockey action via 35 home games and clinics comes alive via the Scorpions, members of the WP Hockey League.

Albuquerque Dukes

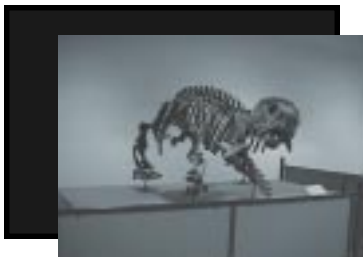
243-1791

The Dukes are the LA Dodgers AAA minor-league team. Baseball enthusiasts flock to the Sports Stadium for over 72 home games a season.

University of New Mexico Sports

925-5526 - Tickets

Name your sport - basketball, football, volleyball, baseball, tennis golf! First-class sports action is delivered at stadiums and facilities citywide by the teams that wear the UNM Lobos uniform.



Echoes of the past gracefully intermingle with imaginative pursuits into the future in the City's extensive collection of museums. Some reflect the rich history, diversity and customs of Albuquerque's original settlers, while others simplify the complexities of science and technology. Newcomers and residents alike never tire of their leisurely explorations through time. Here's a quick tour of:

Albuquerque Biological Park (Albuquerque Aquarium, Rio Grande Botanic Garden, Rio Grande Zoological Park)

2601 Central NW (Aquarium & Garden)
903 10th St. SW (Zoo)
764-6200

The Aquarium features a coral reef, moray eel -tunnel and 285,000 gallon shark tank. Walled Spanish and English gardens and glass conservatories showcase desert and Mediterranean plants at the Botanic Garden. The 60-acre zoo is home to 1,200 animals representing 260 species.

New Mexico Museum of Natural History

1801 Mountain Road NW
841-2800

Offers hands-on displays, walk-through volcanoes and ice age cave, dinosaur dioramas, giant-screen Dynamax Theater.

Indian Pueblo Cultural Center

2401 12th Street NW
843-7270

Explores the 19 New Mexico Pueblo Indian tribes and their culture. Hands-on activities at Pueblo House Children's Museum.

National Atomic Museum

Kirtland Air Force Base
284-3243

Atomic bombers and missiles mix with displays on the development of atomic weaponry.

Albuquerque Museum

2000 Mountain Road NW
243-7255

Features *Four centuries: A history of Albuquerque* permanent exhibit; the sculpture garden containing 32 large works; and rotating exhibits highlighting the region's traditional and modern art.

EXPLORA Science Center & Albuquerque Children's Museum

800 Rio Grande NW
243-7255 (242-4600/Recorded information)

Discovery encouraged via a giant weaving loom, rubbing tables, bubble-making equipment, giant kaleidoscope and hands-on computer equipment.

Maxwell Museum of Anthropology

University and Grand NE
277-4405

One of the leading anthropological research centers in the U.S.; permanent exhibit *Ancestors & People of the Southwest* presents the development of humans over 4 million years.

Meteoritic Museum

UNM Campus/Northrop Hall
277-2747

One-time space debris, along with the world's second-largest stone meteorite - the one-ton Norton Country - are on display.

Campus Observatory

UNM North Campus/Yale NE
277-1446

The premier place in the city for state of the art stargazing activities.



Albuquerque

HEALTH CARE



As Albuquerque grows, it is building a solid reputation as a national leader in health care. An abundance of cutting-edge facilities and a variety of health care providers await new residents of the Greater Albuquerque Metropolitan area.



Albuquerque is known nationwide for its high-tech medical facilities, superior level of primary health care and cutting edge medical research. Residents of all ages can choose from thousands of physicians and ancillary care providers, ready to serve virtually every medical need. Here's a quick look at the major health care facilities and treatment centers in the area:

Veterans Affairs Medical Center

2100 Ridgecrest SE 265-1711

Level II trauma care; cancer care; spinal cord injury unit; substance abuse treatment; mental health treatment; home health care & hospice; women's health program; coordinated behavioral treatment; nursing home unit for seniors; full dental service.

Lovelace Health Systems

Integrated managed health care organization with two medical centers and seven primary care centers; New Mexico's oldest and largest HMO with 120,000 members; a multi-specialty physician group practice; statewide network of contracted providers; owned by CIGNA.

Lovelace Medical Center

5400 Gibson SE 262-7000

Lovelace offers a full range of primary care services and 43 medical specialties including neurology, oncology and cardiology units; cosmetic and reconstructive surgery centers; occupational medicine and rehabilitation therapies; radiology services (with MRI); the state's largest birthing center; optical shop; hearing aid center; and full-service pharmacy.

Lovelace at Journal Center

5150 Journal Center Blvd. NE 262-3200

Primary and specialty care including surgery.

Lovelace Primary Care Centers

Located throughout the city. Call 262-7000 for nearest provider.

Presbyterian Healthcare Services

A New Mexico-owned healthcare organization offering a comprehensive network of hospitals, rural clinics, community-based family healthcare centers, home healthcare services, rehabilitative services and full medical laboratory. PHS is renowned for its organ transplant programs, critical care units, extensive surgical specialty programs, neonatal intensive care unit, high risk maternal unit and Women's Healthcare Center.

Presbyterian Hospital

1110 Central SE 841-1234

Presbyterian Kaseman

8300 Constitution NE 291-2000

24-hour emergency care; alcohol and drug treatment center; behavioral health services; cancer treatment center; arthritis center; physical, occupational and speech therapy programs; sleep disorder center.

Presbyterian Northside

5901 Harper NE 823-8000

Day surgery; occupational medicine

Children's Hospital of New Mexico

2211 Lomas NE 272-KIDS

The 122-bed hospital offers the most comprehensive and advanced pediatric medical care in the state. Specialized units include a neonatal intensive care unit for critically ill premature infants; pediatric cardiology, urgent care surgery and specialty outpatient services.



PARNEGG METRO

**St. Joseph Healthcare System**

St. Joseph was founded in 1902 by the Sisters of Charity. The main medical center is a full-service hospital housing several sub-centers specializing in orthopedics, ophthalmology; neurology; oncology and heart care. The state's only High Dose Rate and Hyperthermia cancer treatment programs are available at the medical center.

St. Joseph Medical Center

601 Dr. Martin Luther King Jr. Ave. NE 727-8000

St. Joseph Rehabilitation Center

505 Elm NE 727-4700

Offers a continuum of rehab care, from acute to outpatient. Programs include physical, occupational, speech and recreation therapies, and living skills training.

St. Joseph Northeast Heights

4701 Montgomery Blvd. NE 727-7800

General medical, surgical and intensive care; OB/GYN, neonatal intensive; children's care; wellness; and Sixty Plus service.

St. Joseph West Mesa

10501 Golf Course Rd. NE 727-2000

General medical, surgical and intensive care; Family Birthing Center and Sixty Plus services.

University Hospital

2211 Lomas NE 272-2111

The 372-bed hospital exists as an adjunct to UNM School of Medicine. Specialized areas include a Level I trauma center, emergency transportation via helicopter or fixed-wing aircraft; a senior health center; state-of-the-art cardiac and cardio-thoracic surgery for adult and pediatric patients; kidney transplants; women's health center with full OB/GYN service; a regional burn center; limb reimplantation; home and hospice care; a sleep disorder center; and an ambulatory outpatient center.

Carrie Tingley Hospital

1127 University NE 272-5200

This hospital has provided pediatric/orthopedic care for children and young adults with physical disabilities and chronic medical conditions for more than 60 years. Services include rehabilitation, orthopedic surgery, prosthetics and orthotics fabrication, and more than 24 clinics for conditions such as cerebral palsy, traumatic brain injury and spina bifida.

UNM Mental Health Center

2600 Marble NE 272-2800

Comprehensive inpatient and outpatient mental health services for mental illness, substance abuse, individual and family therapies, crisis intervention, residential services, and rape and suicide telephone hotlines.

UNM Cancer Research & Treatment Center

900 Camino de Salud NE 272-4946

New Mexico's only National Cancer Institute-designed cancer center. All standard forms of therapy are offered plus more than 200 clinical trial-based treatment regimens.

COLDWELL BANKER



Coldwell Banker Parnegg Metro Realtors

is a full service, diversified real estate company. We have been the highest producing real estate firm in New Mexico since 1990. We are ranked 6th out of more than 2,600 Coldwell Banker offices throughout North America.

We have over 200 full-time professional agents and seven offices to serve you. Four of our offices are located in the Albuquerque Metro Area; one in the East Mountains; one in Los Lunas and one in Placitas.



Selling and buying a home used to mean a short contract with a few signatures. No more. The process of pricing a home right, marketing it to qualified buyers, ordering inspections, assistance with financing, negotiating the sale and completing the transaction is a highly complicated business. These are only a few of the reasons why people turn to **Coldwell Banker PARNEGG METRO Realtors** again and again.

We excel at real estate, because we have the knowledge, experience and ability to help bring success **to the one transaction that counts most - yours!**

A POWERHOUSE COMPANY

On January 1, 1998, we took a big step forward in the growth of our company. We merged with H. Parnegg Realty, Albuquerque's oldest family-owned real estate company with a successful legacy spanning over 50 years. Our name changed on that date from Coldwell Banker METRO Realtors to the name you know today - Coldwell Banker PARNEGG METRO Realtors. By joining forces, we became the #1 real estate company in our market based on total sales, closed volume per agent and closed transaction per agent.

Just as a company is only as good as its people, our sales associates are making use of the best in marketing tools and the latest technology. Pagers cellular phones, e-mail, web-sites, computers, and personal assistants have become the accepted tools of today's successful agents. We are committed to being a leader in the industry and provide our associates with the tools, technology and the support needed by real estate professionals today.

EXPERIENCE

Our agents have an average of over 10 years experience in listing and selling real estate. Many benefits are offered to you as a result of this experience. First, experienced agents know the pitfalls that can occur in a real estate transaction and how to avoid them. This proficiency allows them to safely guide you through your transaction, from contract to closing. Second, the experience gained from establishing and working with a broad client base serves as an abundant resource in meeting the needs of new clients.

COLDWELL BANKER CONCIERGE

We know your time is valuable. Need a painter, roofer, flooring or yardwork done? With our Coldwell Banker Concierge, you no longer have to search for service providers. We've done the work for you. This complimentary service is available to you before, during and long after the sale. Just call our Concierge at **(505) 857-2238** — at your service.

